

Quilters Cables

San Francisco Quilters Guild – February 2016

Website: www.sfquiltersguild.org Guild Contact: sfkg.info@gmail.com

President’s Message

2016 is off to a good start (and it’s hard for me to believe it’s already February!). I find myself grateful for all our guild presidents who have proceeded me and to all the members who have contributed their knowledge and skills to create this wonderful guild. There is so much that goes on behind the scenes . . . which means outside of our monthly meeting. I receive many emails throughout the month keeping me informed about what’s going on or new ideas to consider.

I am also continually inspired by the quilts you share during our show-and-tell time as well as receiving inspiration from our speakers. I just decided to take a class based on the book from one of our past speakers. I’m planning on entering it in our quilt show in just over a year. I think it uses about thirty-seven different fabrics that I think I can pull from my stash without buying anything extra.

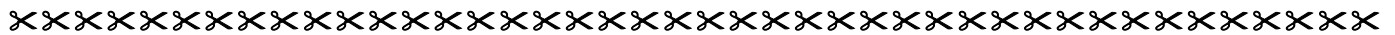
I’m almost finished making my blocks for our opportunity quilt. I just had another guild ask me

when we wanted to come and show it at their guild! They are ready and waiting for our quilt to be finished.

Quiltaway is almost here (February 25–28). That will be an exciting time for all of us as we challenge ourselves to learn new skills and make new or deeper friendships. I can’t thank Cathy Miranker and Barb Strick enough for all the work they have done putting Quiltaway together and also must thank the Postcard team of Gloria Miller, Janet Mednick, and Kenan Shapero. I’m having fun pulling fabrics for the “Wish you were here, Wish I was there” theme.

The kick-off meeting for our QUILT Show 2017 has happened and several people have stepped up to help. There are still many, many ways to get involved to help make our quilt show one that attracts people from other guilds and great distances. We certainly received tremendous feedback from our last one with accolades galore!

Happy quilting, Jane Strem



February 16th: Rachel Clark “Clothing for the Body & Soul”; & “Out of the Crayon Box”

Enjoy a fashion show accompanied by anecdotes on the “hows and whys” of dozens of unique garments—including coats, jackets, and vests—made by Rachel Clark. Also included in this lecture-fashion show is a look at Rachel’s latest project, “Out of the Crayon Box,” a celebration of that first box of crayons you got when you were going back to school. Each crayon is represented by a coat commemorating its color. We need six to eight “models” for this presentation; to volunteer contact Cathy@Miranker.com. www.rdkc.com

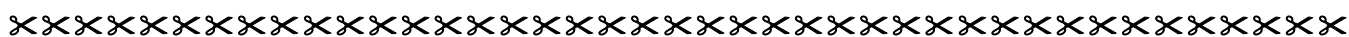


March 15th: Nancy Bardach “Exploring Quilt Design”

Using quilts that range from realistic to semi-abstract to very abstract, Nancy Bardach will talk about how she gets ideas and goes from start to finish . . . and how you can, too. She’ll suggest many ways to design art



quilts and possible springboards to inspiration, including working from an eye-catching image, riffing on traditional patterns, cutting shapes and composing with them, and more. She’ll show starting sketches and then radical changes to her pieces as an idea takes form—then cover the nitty-gritty process of moving from first idea to research, composing, and reworking, up to completion and exhibiting. The goal is to inspire and encourage you, and share some “how-tos” of creative work.



The Sewcial Scene

Sewcials are an important part of our guild. Here's where we learn new techniques, and relearn those old techniques, share our creativity with each other, and just have fun. A supply list will be provided when you sign up (full supply list at guild meeting or on website). In addition to the supply list for each Sewcial, please bring: extension cord, cutting board, rotary cutter, sewing machine, rulers, fabric, etc. Arrive about fifteen minutes before the start of the workshop (9:45 A.M.) to set up and get directions so that we can begin on time. Remember, there are no refunds for cancellations. For the comfort of all, please attend Sewcials "fragrance free." Feel free to bring your lunch or there are several places to eat within walking distance. Please pay fees when you sign up in advance for Sewcials. For more info contact Cathy Miranker <Cathy@Miranker.com>. All Sewcials are held at the San Francisco Police Academy unless noted.

Directions to the Police Academy: Sewcials are held at the SF Police Academy, 350 Amber Drive (at Duncan), near Diamond Heights Safeway. Take SF Muni bus #52 or drive your car, parking is free. Due to construction on Duncan Street at Amber Drive, you will need to enter the Police Academy parking lot from the western end of Amber Drive. From Portola, take Clipper Street to Diamond Heights Boulevard, take the first right onto Duncan, and then right again at the first cross street onto Amber Drive to the Police Academy.

New Low Price for Sewcials! During 2016, the cost of all Sewcial workshops will be \$50 (\$65 for non-members). This price cut represents a yearlong experiment adopted by our guild's board of directors and is intended to encourage more sign-ups for Sewcials. Classes need a minimum of ten participants, and students *must* pay for the class when they sign up—no exceptions. You can read more about the new pricing policy on our website.

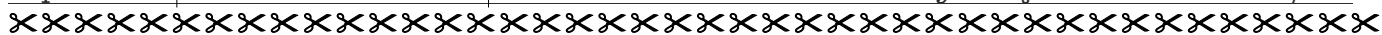
March 19th; 10 A.M. to 4 P.M. Exercise Your Design Muscle

Pretend you're Nancy for a day! To get some hands-on practice with a few key approaches for creating an original quilt, participants will rotate through different design exercises and try playing with black and white, experimenting with composition, exploring transparency, perspective and scale, and more. Nancy Bardach will talk about tricks she learned in architecture school, finding inspiration, looking at fabrics for potential. But her main focus will be on something that sounds simple—how to look—and how to harness that skill to edit your work, change it, and improve it. Please note: Cost, payable in advance, is \$50 for members, plus a \$5 materials fee; \$65 for nonmembers plus a \$7 materials fee. Visit the guild website for a <.pdf> with more details, more photos, and a student supply list.



Upcoming Speakers and Sewcials: We have a terrific line-up of speakers and Sewcial instructors in 2016. Details and lots of photos are already up on our website. Here's a handy chart that shows you the year's programs at a glance:

Month	2016 Speakers	2016 Sewcial Instructor and Class Title	date
February	Rachel Clarke	<i>no Sewcial this month</i>	---
March	Nancy Bardach	Nancy Bardach: Exercise Your Design Muscle!	03/19
April	Carol Van Zandt	Ursula Kern: From Fabric Collage to Quilt	04/23
May	Laura Fraga	Laura Fraga: Techniques for Dear Jane	05/21
June	Tish Chung	Community Outreach	06/25
July	Freddy Moran	Freddy Moran: Patchwork Collage	07/23
August	Kevin Kosbab	Kevin Kosbab: AlphaBlocks	08/20
September	The Pixeladies	Thom Atkins: Bead Embroidery for Quilters	09/24



San Francisco Quilters Guild Meeting Information

- ✂ Meetings are held the 3rd Tuesday of each month (except the November and December meetings are on the 2nd Tuesday) at 7:15 P.M. at the Chinese 7th Day Adventist Church, 7777 Geary Blvd. Doors open @ 6:30 P.M.
- ✂ Guests pay \$5 admission, and all are welcome.
- ✂ Please bring: library books; name tag; sew and tell; secret-pal gift; friendship blocks; block of the month.
- ✂ Board meetings are usually held the fourth Tuesday of each month at 7 P.M.
- ✂ Sewcials are generally held the Saturday following the guild meeting, 10 A.M. to 4 P.M. at Police Academy.



January Board Meeting Summary

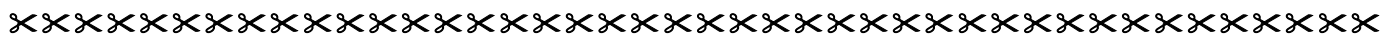
The highlights of the January 26th board meeting included that Jeanie Low attended. We discussed recognizing past presidents at the February meeting and approved funding for gifts.

We discussed a 35th-anniversary party. Jeanie will chair that event.

We also discussed our QUILT Show 2017 and the kick-off meeting Feb 6th—and when to send out a BLAST about that meeting.

February Board Meeting

This month's meeting will be held February 23rd at 7 P.M., at Ortega branch library, 3223 Ortega Street. All members are welcome and invited to join; committee chairs please submit email reports if not attending. Contact Janet Mednick if you have any questions at (415) 509-6027.



History Corner "Honoring Our Guild Presidents"

by Jeanie Low

This month, we are honoring our dedicated guild presidents. Like strong thread that hold bits and pieces of fabric to make beautiful quilts, each president has led our guild forward—and we are richer for their service and example. They and their officers have set the pace as we continue to quilt and share our skills through our community outreach. In our 35 years as a guild, we've been fortunate to have 29 individuals who have served as our guild presidents. A few served as guild presidents more than once and continue to be active as officers and/or committee chairs. We will ask those who are still members and present to step on stage at our February meeting. We miss those who have moved away, are absent, and those who have passed away.

Presidents' Roll Call:

Caroline Lieberman, 1981-83; Linda Breitbarth, 1983-84; Shirley Towan, 1984-85; Gloria Miller, 1985-87; Phyllis Schaefer, 1987-88; Darlene E. Hartman, 1988-90; Ann Gage, 1990-91; Pat Garner, 1991-92; Barbara Blue, 1992-93; Marie Torres, 1993-94; Mary Fischer-Boyd, 1994-95; Glenda Freiberg, 1995-96; Suzanne Searby, 1996-97; Gretchen Nelson, 1997-98; Janet Mednick, 1998-99; Erin Watson, 1999-2000; Julie Scribner, 2000-01; Roberta Walker, 2001-02; Christine Beard, 2002-03; Judy Woodfill, 2003-04; Doris Atkinson, 2004-05; Carolyn Kotner, 2005-06; Laureen Neilly, 2006-07; Linda Breitbarth, 2007-09; Joyce Goode, 2009-10; Carol Munch, 2010-12; Judy Woodfill, 2012-13; Kenan Shapero, 2013-14; Jane Strem, 2014-16.

A Note from One of Our Past Presidents [for two terms!!]

Hi Jeanie: I'm not quilting up as much of a storm as I was in SF. My sewing room is separate now and nowhere near as big. In SF it was my living room so all activities went on together—TV, audio books, etc.—so it was easy to be constantly quilting. Am still sewing though, and crocheting and knitting too. The guild here is great. Membership is about 150. Not quite as many activities as in SF, but a terrific group. I am the Membership Chair this year so I am still keeping my hand in volunteering-wise. Their Community Quilts program is amazing! Last year (and almost every year) over 400 quilts are donated to various charity groups in Bend. They 'require' that every member donate at least one quilt every year, and they meet every Wednesday for three hours to work on quilts. A great group of women. A weekend retreat and one-day show every year. They do a fat-quarter-of-the-month drawing, but . . . no friendship blocks, no

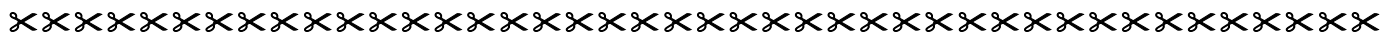


secret pal. They have a great library though. This is fun: at every meeting, if you have a fabric name tag, you get a raffle ticket for the drawing at the end of the meeting, of which, as Membership Chair, I am in charge. Every quilt shop in the area gives a gift certificate (all seven of them), as well as the two sewing machine shops, and one longarm quilter. There are generally a couple of other random gifts donated by members as well, so it is a great time! Mad excitement ensues!



There is always involvement at the Sisters' quilt show, and there is a challenge quilt every year. This year it is really fun. You take any magazine (but no quilting magazines), go to page 38 and create a quilt inspired by what is on that page. It is, of course, called "The Page 38 Challenge". I love it! When the quilts are displayed at the show, the page that inspired you will be attached. Isn't that a great idea? Our Parliamentarian came up with it. There is also an Opportunity Quilt as well—they call it the Raffle Quilt. Don't make as much money on it as the SFQG does, but it is generally quite beautiful. I am a member of a Round Robin group. Pics attached of my first and second. We are getting ready to start our third. Well, that's probably more news than you expected, right? Perhaps you

could share some of this with others at the guild? Sort of my way of keeping in touch? Hope you are doing well; it is nice to see you on FaceBook too! Love, Judy [Woodfill]



Just Days until Quiltaway

Quiltaway 2016, will be held February 25th–28th . . . just days away!

- We've got seventy people participating in Quiltaway!
- Visit the Quiltaway page on the guild website for workshop supply lists, info on advance preparation, and details about the new Postcard Challenge.
- Friday night is Community Outreach time. Please make time to participate—it's one of the guild's most important functions . . . and it's fun! We'll have everything you might need: kits, patterns, batting, backs, and a big tub of scraps.
- Saturday night is our Mystery Quilt. Dani Lawler has again designed a fun quilt for you to try. Plan on doing your cutting in advance; info on fabric choices and cutting instructions are on the website.
- You can also opt to participate in a variety of nightly games. Dottie McHugh will share details at the February meeting.
- Please volunteer your help during Quiltaway. We'll have a sign-up sheet at the February meeting.



QUILT San Francisco 2017 Planning Kick Off

The planning for QUILT San Francisco 2017 was successfully kicked off at the meeting on February 6th. Since I am writing this on the day before the SuperBowl, I'll stick with the football analogy a little bit here. (Oh, please—no yawns permitted.) We have recruited some but not all of the key players for the team. The "not all" part is what I need to address here: there are still a few key positions open and we need to fill them very soon. I will be hitting you all up on these at the next guild meeting, so please give some serious thought to the following:

Show Treasurer: the person who has carried the ball on this one for past shows wants to hand it on. You don't have to be an accountant or experienced bookkeeper, but you do need to be meticulous and good at basic arithmetic. You will be mentored by Gloria Miller (guild treasurer) and Pat Wong (former show treasurer).

Publicity: Jeanie Low has so ably led this committee for past shows, but is not able to do it again. Three or four people are needed, including one to be the leader (or committee chair, if you like). Graphic-design skills a plus but not required.

Featured Artist Wrangler: this person will be liaison between the guild and the chosen outside featured artist, and be responsible for all necessary arrangements—contracts, written permissions to use images, etc.—as well as hosting the artist with respect to arranging for accommodations, transportation, etc. as necessary.

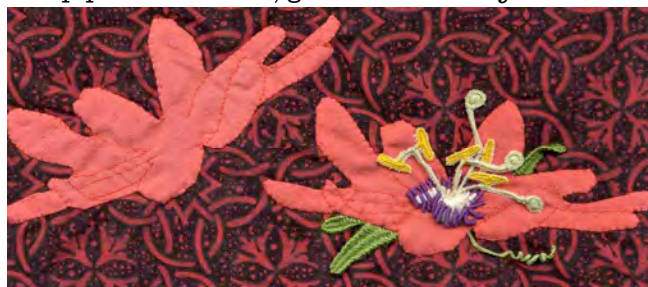
If you have any ideas, feel free to contact Lee Schulstad, (206) 226-3960; LRS303@gmail.com



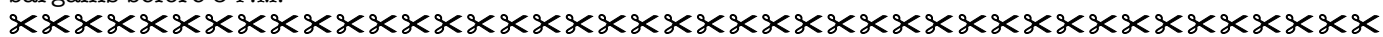
Embroiderers' Guild of America San Francisco

submitted by Christine Anderson

Easter Lambs Don't Eat Our Ivy March 15th. Experience three-dimensional textile techniques shaped by wire at the 10 A.M.-1 P.M. day meeting in the Cayuga Avenue (outer Mission) stitching studio of SF-chapter librarian Irene Thomas. We will provide the 26-gauge wire, sharp-pointed needle, green embroidery floss as you bring a palm-sized scrap of green cotton fabric to fit your smallest wood hoop. That provides the only tension needed for the lesson to make a stitched ivy or other leaf that can be later applied to a name tag, brooch, or artwork not planned for washing. These wired-edged leaves can then be manipulated to bend into naturalistic forms. The same technique is utilized for dragonfly wings and other creative ideas. *R.s.v.p.* (415) 931-9018 or sf.egal3@gmail.com for address and other info. Night before,



Monday March 14 7:30 P.M. **Stitchers' Stash Sale:** Linens, needlepoint canvas, needlework charts and deaccessioned books from the chapter library, assorted wood stretcher bars and hoops, yarns and threads . . . held at St. John's UCC, 501 Laguna Honda Blvd. to fund EGA local educational programs. What one textile artist chooses to clear out becomes the creative nucleus of new-year projects for another. Breeze on by for bargains before 9 P.M.



Community Outreach News

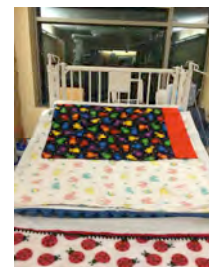
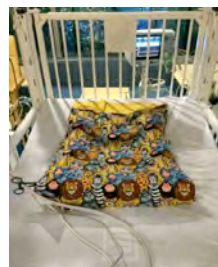
submitted by Adrienne Hickman

Sad to say, I was not overwhelmed with offers to quilt the nine large quilts waiting to be longarmed. I hope it was because I did not include contact information for volunteer longarmers! Contact me at adrienne152@earthlink.net to volunteer. That said, Michael Travis, sometime guild member, has been persuaded to quilt some of them using Karen Reiter's longarm machine. The guild will pay Karen's hourly fee for use of the machine and Michael will be donating his time and skill. If you have been trained on Karen's machine and are willing to do some quilting, please contact me.

Regretfully, Community Outreach will no longer accept bed-size quilt tops, because it's been so difficult to get them quilted. We are happy to receive completed quilts in all sizes.

More Quilts! More Pillowcases! Sixteen preemie quilts were donated at the January meeting. Thank you all! Keep them coming, please. We need lots of quilts and pillowcases for all our recipients. The nurses at SF General love our baby quilts. One nurse said that she shows three to a prospective recipient and lets them choose between them. "They're all so different." Also, check the photos of patient set-ups using our pillowcases at UCSF Benioff Children's Hospital.

Dimensions for Quilts	
preemie quilts:	24" x 24" to 30" x 30"
baby quilts:	36" x 36" to 36" x 45"
twin-size quilts:	60" x 80"



photos Winnie McGeorge

Supplies and Kits Available At every meeting Outreach has available quilt and pillowcase kits, batting for preemie and baby quilts, and a few small quilts that need finishing. Stop by the table and pick something up. You can also contact me for backs, batting, or fabric. I must have a thousand yards of fabric in (cluttering, says my husband) my basement ready to be used for Community Outreach. Come and avail yourself of that fabric. Guild members and friends are welcome. Wednesday and Friday afternoons are best for a "shopping" visit, but do call first. (My phone number is in guild directory.)

Donations Received in January

Pillowcases donated: 10

Quilts donated:

16 preemie quilts

8 baby quilts

1 lap quilt

1 twin quilt

1 lap top

2 donated tops were finished by another quilter

Community Outreach is fun as well as exceedingly helpful for our community. We need more help!





submitted by Pat Metzgar

The Quilter's Stash

Behind the painted picket gate there lived a quilter known as Kate.
She had one son, a boy named John; one daughter, whom she doted on.
She had one husband and one house, one pup, one cat, one little mouse . . .
And 14,287 pieces of fabric!



2016 Events Calendar

submitted by Martha Schwarz

- February 6-May**.....**Carol Cislowksi's Gallery Showing**
Gallery 786 Fine Art, 786 Main Steet, Cambria. www.gallery786fineart.com
- February 18-20**..... **Quilt, Craft & Sewing Festival**
San Mateo Event Center, Fiesta Hall, 1346 Saratoga Drive, San Mateo. www.quiltcraftsew.com
- February 18-21**..... **QuiltCon presented by The Modern Quilt Guild**
Pasadena Convention Center, 300 E. Green Street, Pasadena. The only international modern quilt show. Many special exhibits, including Gwen Marston's. quiltconwest.com Questions? Healthier@themodernquiltguild.com
- through February 21**..... **Stunning Contemporary Quilts**
Oakland Museum of California, 1000 Oak Street (@ 10th Street), Oakland. Vibrant, boldly unique quilts expand the notion of craft in yo-yos and half squares. Info: www.museumca.org
- February 27-28**..... **Pajaro Valley Quilt Association "Quilt Show and Auction"**
Santa Cruz County Fairgrounds, 2601 E. Lake Ave., Watsonville. www.pvqa.org
- February 27-28**..... **Foothill Quilters Guild present "Fruit of Our Love and Labor"**
Gold Country Fairgrounds, 1273 High Street, Auburn. www.foothillquilters.org
- through February 28**..... **Royal Hawaiian Featherwork: Nā Hulu Ali'i**
de Young Museum. Explore the distinctive art, culture, and history of Hawai'i with rare and stunning examples of the finest featherwork capes and cloaks in existence. famsf.org
- through February 28**..... **The Russian River Watershed in Fabric: Altered Points of View**
San Jose Museum of Quilts & Textiles, 520 S. First Street, San Jose. This exhibit includes nineteen pieces from the 2015 quilt challenge by Sonoma's Pointless Sisters. sjquiltmuseum.org
- March 19-20**.....**Voices in Cloth 2016: Extraordinary Quilts by the Bay**
East Bay Heritage Quilters. Craneway Pavilion, 1414 Harbor Way South, Richmond. www.ebhq.org
- March 19-20, 2016** **Sonoma Quilt Show 2016**
Vintage House Senior Center, 264 First Street, East Sonoma. Featured artist: Kathy Martin.


 Please join us
 in celebrating the work of
Carol Cislowski
 from San Francisco
 Contemporary Textile Artist
 Saturday, the sixth of February
 Six O'clock in the evening
 Gallery 786 - Fine Art
 786 Main Street
 Cambria, Ca 93428


Wee Scotty
Valentine's Day
Sale!
All Month Long



In Store Discounts
On All Machines In
Stock!



609 Clement Street
 San Francisco, Ca 94118
contact@weescotty.com
www.weescotty.com

Newsletter Submissions

The San Francisco Quilters Guild publishes a monthly newsletter. Current members receive newsletters electronically by email, by picking them up at the guild meetings, or by having them mailed to your home. The deadline for newsletter submissions is the first Tuesday of the month of publication (the November newsletter deadline is one week earlier, and there is no newsletter in December). All submissions *must* be pre-edited. Please email news, articles, and event notices to Ginger Ashworth, sfqc.editor.gingerashworth@gmail.com. **For advertising**, email file, then send check to SFQG, P.O. Box 27002, San Francisco, CA 94127. We accept advertising relevant to our membership. For members the 1/8-page rate is \$20/month, the 1/4-page rate is \$40. For nonmembers, \$25 and \$45 respectively. A three-month run is encouraged.

Board Members

President: Jane Strem (415) 847-7080 JLStrem@gmail.com	Vice President: Janet Mednick (415) 509-6027 JanetRMednick@gmail.com	Treasurer: Gloria Miller (415) 387-6508 GloriaMillerSF@gmail.com	Secretary: Sheila Solomon (415) 566-8326 SheilaSolomon@comcast.net	Parliamentarian: Claudia Shearer (415) 759-1552 CsjShearer@gmail.com
---	---	--	---	--

Committee Members

California Heritage Quilt Project Rep.
Caroline Lieberman
Communications Chair Ginger Ashworth, Barbara Strick
Community Outreach Adrienne Hickman
Email Monitor Barbara Strick
Friendship Blocks Pat Knapp
Historian Jeanie Low
Hospitality open
Librarian Cher delaMere
Library Special Projects Dani Lawler

Mailbox Martha Schwarz
Membership Martha Schwarz
Membership Database Dani Lawler
NCQC Representatives Laraine Salmon
Newsletter Calendar Martha Schwarz
Newsletter Editor Ginger Ashworth
Newsletter Mailing Jane Yamada
Opportunity Quilt 2016-2017 open
Photographer Nancy Clock
Postcard Team Gloria Miller, Janet Mednick, Kenan Shapero

Program Team Carol Cislowksi, Cathy Miranker
QUILT San Francisco 2017 Lee Schulstadt
Quiltaway 2016 Barbara Strick, Cathy Miranker
Saturday Sewcials Cathy Miranker
Secret Pals Dottie McHugh, Joan House
Website Manager Barbara Strick

please patronize our Affiliates

Always Quilting
Kit Morse, Julie McAuliffe
4230 Olympic Avenue; San Mateo 94403
(650) 458-8580
www.alwaysquiltingonline.com

Broadway Quilts
20525 Broadway
Sonoma; 95476; (707) 938-7312
www.broadwayquilts.com

Dorcas Hand Quilters
St. John's Presbyterian Church
25 Lake Street; SF 94118
(415) 826-0870; aldwj@sbcglobal.net

Laura Lee Fritz, Longarm Quilting
1030-A Railroad Avenue; Novato 94945
(415) 320-4369
www.LauraLeeFritz.com

Neal's Yard Remedies • Caroline Cory
1864 Alemany Blvd; SF 94112
(415) 531-4382
us.nyrganic.com/shop/CarolineTC

QuiltWorks and ThriftStitch
2189 Bayshore Blvd., #101; SF 94134
(415) 656-1607
www.quiltworks.org

Scruffy Quilts
Nina Ashton
11 37th Avenue; San Mateo 94403
(650) 274-0292
www.ScruffyQuilts.com

Serge'a Lot • Sherri Stratton
1949 Ocean Avenue; SF 94127
(415) 715-8405
www.sergealot.com

Sips 'n Sews
1144 Sutter St.
San Francisco, CA 94109
(415) 814-2036
info@SipsnSews.com

Stonemountain & Daughter Fabrics
2518 Shattuck Ave; Berkeley 94704
(510) 845-6106
www.stonemountainfabric.com

The Treasured Thread
Diane Bare Longarm Quilting & Embroidery
304 Burt Street; Santa Rosa 95404
(707) 571-2078
www.thetreasuredthread.com

Rockingstitch Productions
Joe Cunningham
1415-D Compton Road; SF 94129
(415) 379-9387
www.joethequilter.com

Textile Dream Studio
Learn•Practice•Share. Sue Fox
2525 8th St, #13-C; Berkeley 94701
(510) 849-0908
www.textiledreamstudio.com

Wee Scotty
609 Clement Street
San Francisco, Ca 94118
(415) 221-9200
www.WeScotty.com



XX

Membership Application

Membership runs from the beginning of October to the end of September. Just fill in the form below and mail it in, or if you want to pay with PayPal, go to our website and follow the prompts. Forms must be in by the end of December for inclusion in the Directory that is published in January.

Membership Categories:

- Full Membership \$35
- Junior Membership (up to age 18) \$25
- Newsletter only \$10
- Affiliate \$50
- Donation \$ _____
- Cash, or Check # _____

May we include you in our *Guild Directory*, published in January? Our *Directory* is for guild use only. Please check only one:

- Name, phone, street, and email addresses
- Name and phone number only
- Name and email address only
- Name, phone number, and email
- No entry

- Renewal New Member

name _____

address _____

city _____ state ____ zip _____

phone _____

email _____

Please check one:

I prefer to receive my newsletter by
 email **OR** hard copy



San Francisco Quilters Guild
P.O. Box 27002
San Francisco, CA 94127